

APPLICATIONS: Horticulture, controlled environment agriculture, daylight supplementation in greenhouse structures, aquaponics.

DESCRIPTION: Digilux Metal Halide and High Pressure Sodium lamps are favored by growers because of the wide color spectrum and efficiency. They are engineered for use in digital ballasts and feature enhanced red/orange spectrums (HPS) and blue spectrums (MH), better color uniformity, longer lamp life, and less lumen depreciation. Digilux lamps can be used in both vertical and horizontal fixtures, and offer superior performance compared to traditional MH and HPS lamps. Digilux HPS lamps deliver 25% more energy than competing HPS lamps in the red and orange spectrums, and Digilux MH lamps deliver 25% more energy in the blue, violet, and green spectrums than competing MH lamps.

PERFORMANCE DATA

Rated Initial lumens at 100 hrs	76,000
Rated Average Life	24,000 hrs
Kelvin Temperature	2000K
CRI	10
Lumens per Watt	125
Photosynthetic Photon Flux	927 $\mu\text{mol/s}$
Warm-up Time	4 min
Hot Re-strike Time	5 min

RE-LAMP INTERVAL

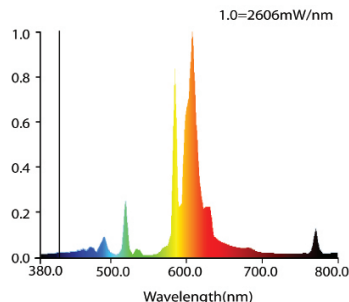
Optimum Growth	9-10 months
Average Growth	11-12 months
Maintenance Growth	13-16 months
Operating Position	Universal

ELECTRICAL CHARACTERISTICS

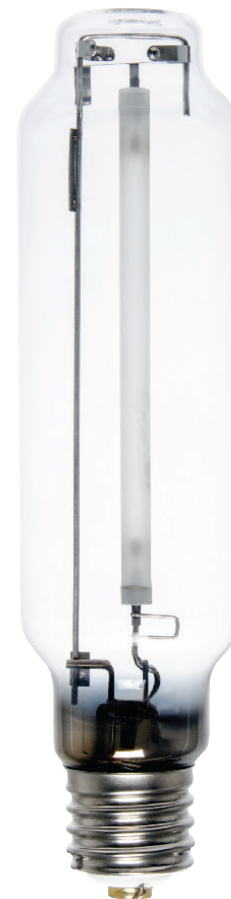
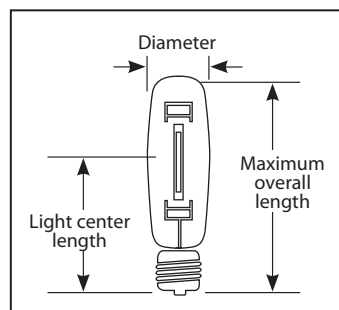
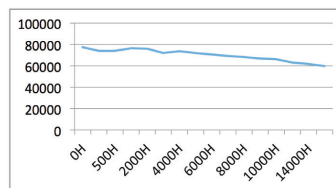
Lamp Wattage	600W
ANSI Ballast Requirements	S106
Open Fixture Rated	Enclosed

PHYSICAL DESCRIPTION

Lamp Diameter (inches)	2.71
Max Overall Length (MOL) (inches)	11.22
Lamp Center Location (LCL) (inches)	6.81
Lamp Finish	Clear
Lamp Designation	TT67
Base Type	Mogul E39



Lumen Depreciation Curve




CAUTION: This is an electric discharge lamp. Use only with proper circuits and auxiliary equipment. Failure to comply with this requirement may result in poor performance and possible personal injury or property damage for which the lamp manufacturer will not be responsible. Do not scratch glass bulb or subject lamp to undue pressure as either may cause the lamp to break. Wear safety glasses and gloves when installing or removing lamp.

WARNING: This lamp can cause serious skin burn and eye inflammation from shortwave ultraviolet radiation if outer envelope of the lamp is broken or punctured. Do not use where people will remain for more than a few minutes unless adequate shielding or other safety precautions are used. This lamp complies with USA Federal Standard 21 CFR 1040.30 and Canada Standard SOR/80-381.

AUXILIARY EQUIPMENT: Lamps must be operated on ballasts and luminaires that meet all applicable ANSI specifications. External protection for the lamp is required to minimize bulb breakage due to water contact during lamp operation. For the total supply load, add auxiliary watts to lamp watts.

NOTICE: If outer bulb is broken, care must be taken to avoid contact with the arc tube support to avoid electrical shock hazard. Power should be off and lamp cool during replacement.

 Lamp contains mercury. Manage in accordance with disposal laws.
lamprecycle.org