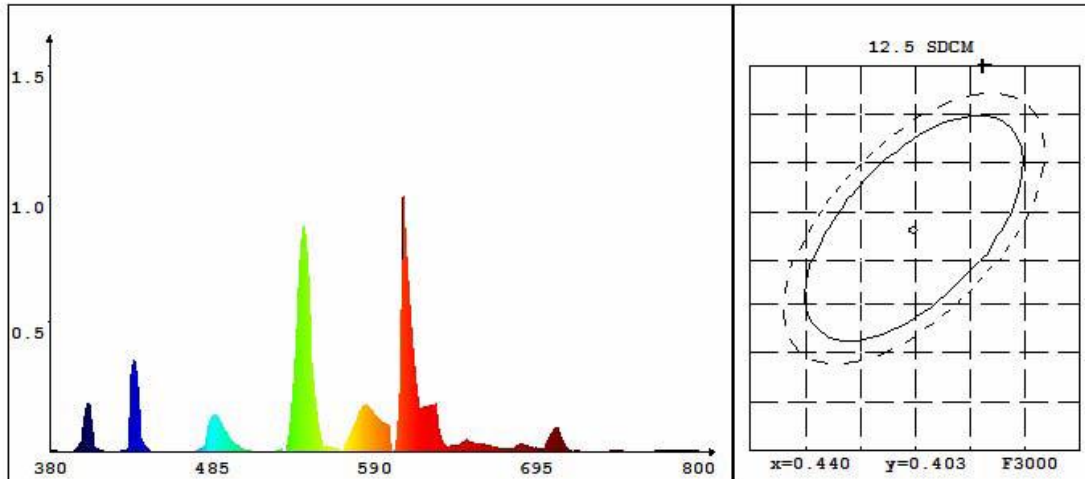


Light Source Test Report

**CIE Color Parameters:**Chromaticity Coordinate: $x=0.4463$ $y=0.4306$ $u=0.2454$ $v=0.3551$ Correlated Color Temperature: $T_c=3049K$ Red Ratio: $R=29.303\%$ Peak Wave: $\lambda_p=610nm$ Half Width: $\Delta\lambda_p=7.0nm$ Rendering Index: $R_a=79.3$

R1 =96

R2 =90

R3 =47

R4 =88

R5 =83

R6 =75

R7 =88

R8 =67

R9 =-7

R10=40

R11=74

R12=36

R13=97

R14=65

Photo Parameters:Luminous Flux: $\Phi=5071(lm)$ Efficiency $\eta=93.73(lm/w)$ **Electrical Parameters:**Voltage: $U=123.2V$ Current: $I=0.447A$ Power: $P=54.10W$ Power Factor: $PF=0.980$ **Instrument Status:**

Scan Range: 380nm-800nm

Interval: 5nm

PMT HV: -485V

Main: RM=1

Id=10

Ip=3157

Reference: RF=2

REF=912

 $\sigma=0.438\%$

Product Type: 54w2900k-cp

Test Department: g

Manufacturer : 44.24KHz

Instrument: Everfine PMS-3 System

Test Operator:

Test Date : 2010-04-23 17:27

Temperature : 38°C

Humidity : 60%